

Storm Sewer Survey Phase 1

- Surveyed 3376 feet of storm water piping (0.64 miles)
 - Concrete – 12”
 - PVC – 8”
- Surveyed sections found to be functional with no major concerns reported
- Typical issues noted were:
 - Root intrusion along several sections – Photo 1
 - Storm drains filled with sediment – Photo 2
 - Minor longitudinal cracks along the concrete sections with some mineral buildup at joints/penetrations
- Remediated the sediment buildup at the storm drain sumps

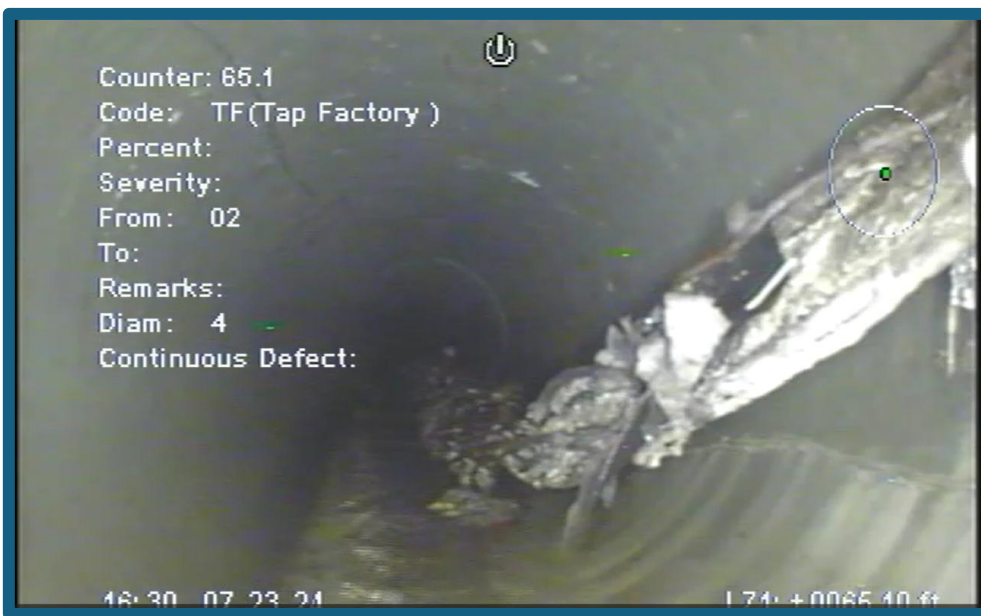


Photo 1 – Tree Root Intrusion



Photo 2 – Storm Drain Filled w/Sediment